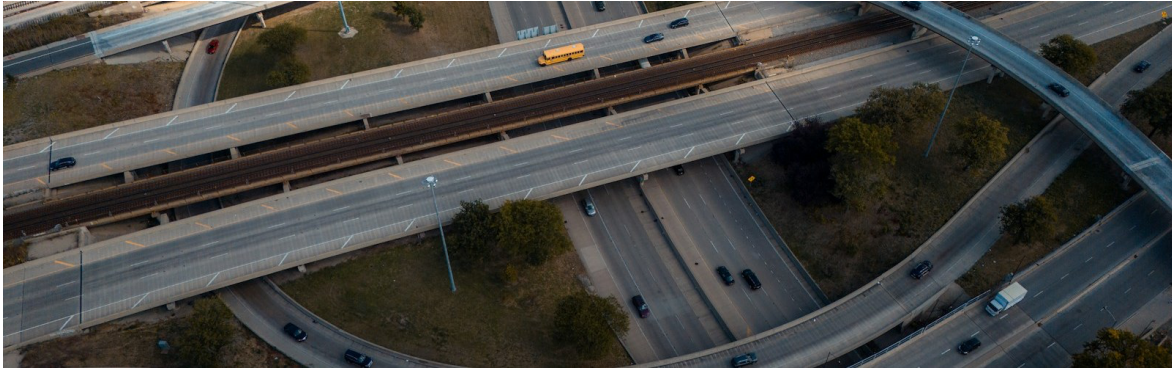




TRAFFICIQ™

Speed

Speed Enforcement & ANPR Camera System • Radar / LiDAR



SYSTEM OVERVIEW

TrafficIQ Speed is Achieva's enforcement camera engineered for highways, defence installations, industrial campuses, and tolling operations. Available in Radar and LiDAR detection combinations, it delivers certified-grade ANPR and speed measurement up to 250 km/h across two lanes — fully integrated with Achieva ConnectIQ for cloud-based evidence management, live monitoring, and analytics.

KEY APPLICATIONS

Highway Speed Enforcement

Continuous speed monitoring on national highways, expressways, and high-speed corridors with ± 1 km/h accuracy.

Defence & Critical Infrastructure

Perimeter monitoring and vehicle access control for naval bases, air force stations, and defence installations.

Industrial Campus Safety

Speed compliance enforcement within SEZs, plants, refineries, and large industrial campuses.

Toll Plazas & Concessionaires

Free-flow vehicle identification supporting tolling and managed-lane operations.

ANPR & AID CAPABILITIES

- On-board OCR library covering 41 European, 13 Asian, 6 African, and 5 South American countries — including comprehensive Indian state plates, BH-series, defence, commercial, and ADR/hazmat plates.
- Daytime classification across 13+1 vehicle types and 11 colours; night-time classification across 4+1 classes; ~100 brands and ~400 rear-view models supported.
- Automatic Incident Detection: stationary vehicle, wrong-way driving, slow traffic, and queue formation, with traffic-state classification.
- On-board black-list and white-list matching for stolen, wanted, and authorised vehicle alerts.

POWERED BY ACHIEVA CONNECTIQ

Every TrafficIQ unit ships with native integration to Achieva ConnectIQ — our cloud-based enforcement platform delivering live violation feeds, evidence packs, automated challan workflows, fleet health monitoring, and analytics dashboards. One platform, your entire fleet.

IMAGING & DETECTION SPECIFICATIONS

Camera sensor	5 MP bi-spectral (IR + colour) single-head, 2560 × 1936 pixels and other models as per client requirement
Frame rate	Up to 75 fps
Lane coverage	2 lanes simultaneous
Plate reading speed	Up to 250 km/h in free-run mode
Illumination	Integrated stroboscopic IR LED, 850 nm, Class 1M
Detection technology	Radar / LiDAR combination — 4D FMCW Doppler radar (60–64 GHz, MIMO 4 Rx + 3 Tx) and/or LiDAR sensor variant as per project requirement
Speed range / accuracy	5 to 250 km/h, better than ±1 km/h
Working distance	15 to 35 metres

CONNECTIVITY, POWER & ENVIRONMENT

Network	Gigabit Ethernet, Wi-Fi, optional 4G LTE
Video streaming	RTSP H.264, HLS, MJPEG; ONVIF Profile S compliant
VMS integration	ONVIF Profile S compatible with all major Video Management Systems; native protocol support for industry-standard platforms
Storage	128 GB SSD on-board (expandable up to 4 TB); continuous NVR with per-transit clip generation
API & protocols	REST API with token authentication; TCP/IP, UDP, HTTPS, FTPS, RTSP, openVPN, NTP, SNMP
Data security	AES-256-ECB encryption, SHA-512 image hashing, GDPR-compliant
Power supply	24 VDC / PoE+ / Solar (with optional Achieva solar kit); typical consumption 12 W
Environmental	–30 °C to +55 °C, IP66, up to 90% RH non-condensing
Mounting	Pole or gantry; bracket included

CERTIFICATIONS & COMPLIANCE

ISO 9001:2015 • ISO/IEC 27001:2022 • ISO/IEC 27017:2015 • ISO/IEC 27018:2019
 BIS • WPC • LMPC • EPR • FCC • CE • NEMA • NABL • ARAI Type Approval

READY TO DEPLOY?

Site surveys, technical demonstrations, and project proposals — hello@achievasystems.com • www.achievasystems.com