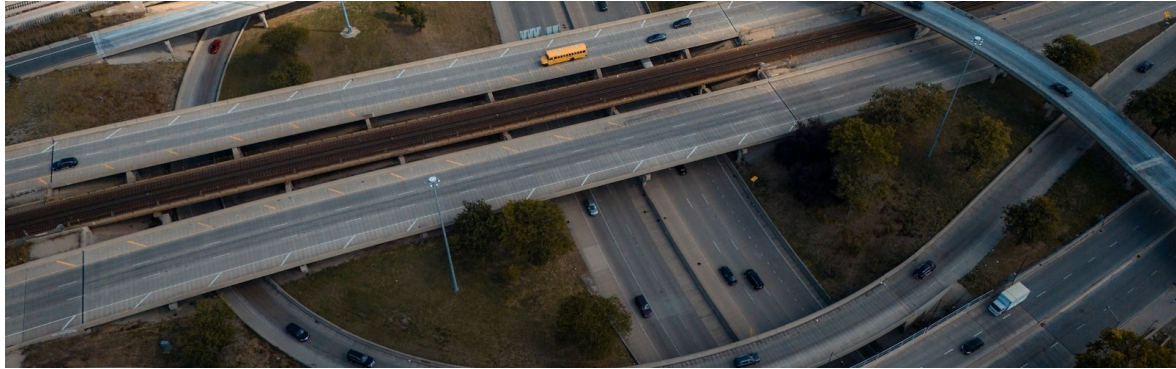




TRAFFICIQ™

## Highway

High-Speed Multi-Lane Enforcement & ANPR • Radar / LiDAR



### SYSTEM OVERVIEW

TrafficIQ Highway is Achieva's high-performance multi-lane enforcement camera, engineered for national highways, expressways, and major arterial corridors. Combining a 12 MP OCR sensor with an 8 MP colour context sensor and Radar/LiDAR detection, it delivers reliable plate capture at speeds up to 320 km/h across 3 lanes. Designed for highway concessionaires, NHAI, state PWDs, and large infrastructure operators — fully integrated with Achieva ConnectIQ.

### KEY APPLICATIONS

#### National Highways & Expressways

Multi-lane speed enforcement and ANPR for NHAI corridors, state highways, and tolled expressways operating at high speeds.

#### Tolling & Concessionaire Operations

Free-flow vehicle identification supporting electronic tolling, classification billing, and managed-lane operations.

#### Point-to-Point Average Speed (Tutor)

Synchronised entry-exit camera pairs for average-speed enforcement zones across tunnels, bridges, and accident-prone stretches.

#### AID — Incident Detection

Continuous monitoring for stationary vehicles, wrong-way driving, slow traffic, and queue formation across the carriageway.

### ANPR & AID CAPABILITIES

- On-board OCR library covering 41 European, 13 Asian, 6 African, and 5 South American countries — including comprehensive Indian state plates, BH-series, defence, commercial, and ADR/hazmat plates.
- Daytime classification across 13+1 vehicle types and 11 colours; night-time classification across 4+1 classes; ~100 brands and ~400 rear-view models supported.
- Automatic Incident Detection: stationary vehicle, wrong-way driving, slow traffic, and queue formation, with traffic-state classification.
- On-board black-list and white-list matching for stolen, wanted, and authorised vehicle alerts.

### POWERED BY ACHIEVA CONNECTIQ

Every TrafficIQ unit ships with native integration to Achieva ConnectIQ — our cloud-based enforcement platform delivering live

violation feeds, evidence packs, automated challan workflows, fleet health monitoring, and analytics dashboards. One platform, your entire fleet.

## IMAGING & DETECTION SPECIFICATIONS

Configuration	Dual-head camera — high-resolution OCR + colour context
OCR sensor	12 MP, IR global shutter
Colour context sensor	8 MP, rolling shutter
Frame rate (OCR / Colour)	Up to 42 fps / Up to 60 fps
Lane coverage	3 lanes simultaneous
Plate reading speed	Up to 320 km/h in free-run mode
Optics	Standard C-mount, varifocal
Illumination	Dual integrated stroboscopic IR LED arrays, 850 nm, Class 1M, synchronised pulse capture
Detection technology	Radar / LiDAR combination — selectable per project requirements

## CONNECTIVITY, POWER & ENVIRONMENT

Network	Gigabit Ethernet, Wi-Fi, optional 4G LTE
Video streaming	RTSP H.264, HLS, MJPEG; ONVIF Profile S compliant
VMS integration	ONVIF Profile S compatible with all major Video Management Systems; native protocol support for industry-standard platforms
Storage	256 GB SSD baseline (expandable up to 4 TB); 8 GB RAM, 16 GB e-MMC flash
Processor	Quad-core ARM with HW video encoder + neural coprocessor (NVIDIA-powered deep learning)
API & protocols	REST API with token authentication; TCP/IP, UDP, HTTPS, FTPS, RTSP, openVPN, NTP, SNMP
Data security	AES-256-ECB encryption, SHA-512 image hashing, GDPR-compliant
Power supply	24 VDC / PoE+ / Solar; typical consumption 12 W
Environmental	-30 °C to +55 °C, IP66, 350 × 270 × 165 mm, 6 kg
Mounting	Pole or gantry; HP-series mounting bracket included

## CERTIFICATIONS & COMPLIANCE

ISO 9001:2015 • ISO/IEC 27001:2022 • ISO/IEC 27017:2015 • ISO/IEC 27018:2019  
BIS • WPC • LMPC • EPR • FCC • CE • NEMA • NABL • ARAI Type Approval

## READY TO DEPLOY?

Site surveys, technical demonstrations, and project proposals — [hello@achievasystems.com](mailto:hello@achievasystems.com) • [www.achievasystems.com](http://www.achievasystems.com)